



Montreal | Toronto | New York

CATALOGUE

*INVENTORY CATALOGUE FOR THE
MACHINERY AND EQUIPMENT OF:*

MÉGABOIS
*3408 Lafontaine
Lac-Mégantic, Québec*

58 De Bresoles, Suite #1,
Montreal, QC H2Y 1V5
Tel. : (514) 395-4444
Fax : (514) 395-8811
1-800-843-2338

May 2, 2006

www.ciacpcc.com

“40 Years of Knowledge & Experience Working for You!”

MÉGABOIS
3408 LAFONTAINE, LAC-MÉGANTIC, QUÉBEC

MACHINERY AND EQUIPMENT

ITEM #	QTY	DESCRIPTION	MODEL	SERIAL #
--------	-----	-------------	-------	----------

BUILDING 1
WAREHOUSE AND OFFICES

1	1	part washer, 20 gallons	n/a	n/a
2	3	pumps, lever type	n/a	n/a
3	1	rotating pump	n/a	n/a
4	1	Janmor drill press	TT-13	7863
5	1	tool chest	n/a	n/a
6	1	Air Max 5 hp 1 stage air compressor	IC-580H	1199523010
7	1	John Deer wheel loader, 17300 hrs (photo # 1)	644g	n/a
8	1	Volvo BM wheel loader, 41800 hrs, (1993) (photo # 2)	L120b	n/a
9	1	Prentice log loader, +-40000 hrs, (1993) (photo # 3)	325	n/a
10	1	lot of loader buckets (photos # 4, 5)	n/a	n/a
11	1	International truck, (1990) (photo # 6)	2574-6x4	n/a
12	1	office equipment including: 1 conference table w/ 8 chairs 2 wooden desks 3 gray desks 1 vertical file cabinet w/ 4 drawers 6 fabric covered chairs (photos # 7, 8, 9, 10, 11)	n/a	n/a

MÉGABOIS
3408 LAFONTAINE, LAC-MÉGANTIC, QUÉBEC

MACHINERY AND EQUIPMENT

ITEM #	QTY	DESCRIPTION	MODEL	SERIAL #
--------	-----	-------------	-------	----------

BUILDING 3
DRYERS

13	2	Uraken dehumidifying unit, cap. 75 000 fb with: 1 75 hp compressor 1 25 hp blower 8 3 hp ventilators 1 suspension and duct system 1 air evacuation system (photos # 12, 13)	LR075-53	880427 et 880428
14	1	Klockner Moeller comand control	200	n/a
15	1	digital scale	n/a	n/a
16	1	mini laboratory oven	n/a	n/a

BUILDING 4
SAW MILL

17	1	Prentice stationary loader, (1995) (photo # 14)	120C	22033462
18	1	50 hp hydraulic pump	n/a	n/a
19	1	log feeder for chain conveyor from the outside to barker, 11' X 35' 1 30 hp motor w/ gear reducer 1 heavy duty 4 arm pneumatic plug loader (photo # 15)	n/a	n/a
20	1	HMC barker, (1998) 1 30 hp motor with: 1 12 wheel log turner 1 10 hpp hydraulic pump 1 5 arm pneumatic log ejector 1 operator consol w/ armchair (photo # 16)	V206	n/a

MÉGABOIS

3408 LAFONTAINE, LAC-MÉGANTIC, QUÉBEC

MACHINERY AND EQUIPMENT

ITEM #	QTY	DESCRIPTION	MODEL	SERIAL #
21	1	4 chain transfer conveyor from barker to clamp carriage, 12' x 40' 1 7,5 hp motor w/ gear reducer (photo # 17)	n/a	n/a
22	1	USNR 4 clamp carriage, (2003) (photos # 18, 19)	MW-465L	n/a
23	1	75 hp motor with: 1 hydraulic positionner 1 7 arm pneumatic log loader 1 hydraulic log turner 12 6" x 30" motorised feeding rolls 1 3 hp motor w/ gear reducer 1 Comact 60" bi-saw (12" blade) (photo # 20)	n/a	n/a
24	1	150 hp motor with: belt conveyor, 3 hp motor w/ gear reducer tensionnor, 2 hp motor w/ gear reducer USNR optimisation cut system sound proof operator cabine, 4' x 7' - 8' w/ control desk 1 motorised exit conveyor, 43 rolls, 6" X 24" 2 2 hp motors w/ gear reducer 3 pneumatic stoppers, 4" x 6" (photo # 21)	n/a	n/a
25	1	8 chain transfer conveyor from Comact bi-saw to next conveyor, 16' x 9' 1 3 hp motor w/ gear reducer 1 pneumatic cylinder, 4" x 12" (photo # 22)	n/a	n/a
26	1	6 chain transfer conveyor to re-saw, 16' x 11' 1 3 hp motor w/ gear reducer (photo # 22)	n/a	n/a

MÉGABOIS

3408 LAFONTAINE, LAC-MÉGANTIC, QUÉBEC

MACHINERY AND EQUIPMENT

ITEM #	QTY	DESCRIPTION	MODEL	SERIAL #
27	1	PHL 60" re-saw 1 150 hp motor with: 3 chain hydraulic log turner 7 roll motorised conveyor, 8" x 24" 3 hp motor w/ gear reducer 1 table, 3 hp motor w/ gear reducer 1 10 hp hydraulic pump 10 roll motorised exit conveyor, 6" x 36" 3 hp motor w/ gear reducer 1 pneumatic stopper, 4" x 6" 6 30" lateral chains, 1 hp motor w/ gear reducer 1 pneumatic cylinder, 4" x 6" (photos # 23, 24, 25)	B-72	S-109
28	1	7 chain transfer conveyor from re-saw to return conveyor, 15' x 4' 1 3 hp motor w/ gear reducer 2 pneumatic cylinders, 4" x 12" (photo # 25)	n/a	n/a
29	1	24" x 15" return conveyor 1 3 hp motor w/ gear reducer steel chute (photo # 25)	n/a	n/a
30	1	24" x 11' incline belt conveyor 1 3 hp motor w/ gear reducer (photo # 26)	n/a	n/a
31	1	RT 5 chain transfer conveyor to re-saw, 14' x 6' 1 3 hp motor w/ gear reducer (photo # 27)	n/a	n/a
32	1	4 chain transfer conveyor from bi-saw to multi blade rip- saw, 13' x 7' 1 5 hp motor w/ gear reducer 2 pneumatic cylinders, 4" x 6" (photo # 28)	n/a	n/a

MÉGABOIS

3408 LAFONTAINE, LAC-MÉGANTIC, QUÉBEC

MACHINERY AND EQUIPMENT

ITEM #	QTY	DESCRIPTION	MODEL	SERIAL #
33	1	Forano multi blade rip-saw 1 100 hp motor with: 5 gravity rolls, 4" x 12" 2 laser guides 1 set of feeding roll 1 7,5 motor w/ gear reducer 1 exit belt conveyor, 4" x 21' 1 3 hp motor w/ gear reducer 1 5 pressure wheels 1 exit conveyor, 12" x 21' 1 3 hp motor w/ gear reducer (photo # 29)	6BB	n/a
34	1	motorised conveyor from rip-saw to edger 15 rolls, 6" x 30" 1 7,5 motor w/ gear reducer 5 36" lateral chains 1 1 hp motor w/ gear reducer 1 pneumatic stopper, 4" x 6" (photo # 30)	n/a	n/a
35	1	RT chain transfer conveyor to multi blade rip-saw, 13' x 7' 1 3 hp motor w/ gear reducer (photo # 31)	n/a	n/a
36	1	RT 7 chain transfer conveyor from motorised roll conveyor to rip-saw, 13' x 4' 1 3 hp motor w/ gear reducer (photo # 30)	n/a	n/a
37	1	Comact rip saw 1 75 hp motor with: 2 gravity feed rolls, 4" x 36" 3 gravity feed rolls, 4" x 16" 1 set of motorised feed rolls 1 5 hp motor w/ gear reducer 2 laser guides 1 exit belt conveyor, 4" x 21' 1 3 hp motor w/ gear reducer 6 pressure wheels (photos # 32, 33)	836-32	122

MÉGABOIS

3408 LAFONTAINE, LAC-MÉGANTIC, QUÉBEC

MACHINERY AND EQUIPMENT

ITEM #	QTY	DESCRIPTION	MODEL	SERIAL #
38	1	RT 5 chain transfer conveyor from rip saw to next transfert , 18' x 31' 1 10 hp motor w/ gear reducer (photo # 34)	n/a	n/a
39	1	5 chain transfer conveyor to next transfer, 13' x 7' 1 3 hp motor w/ gear reducer (photo # 35)	n/a	n/a
40	1	6 plunger chain transfer conveyor to next transfer, 16' x 18' 1 5 hp motor w/ gear reducer 8 straightening rolls, 4" x 38" 1 1 hp motor w/ gear reducer 1 double edger, 5 hp motor each 16 ft gravity conveyor (photos # 35, 36)	n/a	n/a
41	1	5 chain transfer conveyor to sorting table, 14' x 18' 1 2 hp motor w/ gear reducer 1 Gényinformatique pointing system (photo # 37)	n/a	n/a
42	1	belt conveyor from trimmer to rip saw, 18" x 22' 1 3 hp motor w/ gear reducer (photo # 38)	n/a	n/a
43	1	4 chain sorting table, 11' x 72' 1 5 hp motor w/ gear reducer (photos # 39, 40)	n/a	n/a
REPAIR ROOM (photo # 41, 42, 43, 44)				
44	1	plywood cabinet, 2' x 4' - 8'	n/a	n/a
45	1	King 14" cut-off saw	n/a	n/a
46	1	lot of assorted tools	n/a	n/a
47	1	labricant pump	n/a	n/a

MÉGABOIS
3408 LAFONTAINE, LAC-MÉGANTIC, QUÉBEC

MACHINERY AND EQUIPMENT

ITEM #	QTY	DESCRIPTION	MODEL	SERIAL #
48	1	air hoses	n/a	n/a
49	1	steel table 2" et 0,5", 3' x 5' 1 8" vise	n/a	n/a
50	1	King drill press, (1999)	KC-30FC	113213
51	1	welding torches	n/a	n/a
52	1	mobile tool chest	n/a	n/a
53	1	ply wood cabinet, 1' x 2' - 8'	n/a	n/a
54	1	8" double pedestal grinder	n/a	n/a
55	1	ply wood cabinet, 1' x 3' x 3'	n/a	n/a
56	1	16" electric chain saw	n/a	n/a
57	1	steel table, 2" et 1/8", 2' x 3'	n/a	n/a
58	1	metal cabinet, 2' x 3' x 3'	n/a	n/a
59	1	6" King double pedestral grinder	KC-680	n/a
60	1	metal cabinet, 1' x 2' x 3'	n/a	n/a
61	4	piece cabinets, 40 parts	n/a	n/a
62	6	piece cabinets, 72 parts	n/a	n/a
63	1	Super 1 hydraulic hose clamper	T-420	n/a
64	1	5' aluminum step ladder	n/a	n/a
65	1	spare parts	n/a	n/a
66	12	4 drawer filing cabinets	n/a	n/a
67	1	211 sections rack for metal	n/a	n/a
68	1	lot of sharpening tools (photo # 45)	n/a	n/a

MÉGABOIS
3408 LAFONTAINE, LAC-MÉGANTIC, QUÉBEC

MACHINERY AND EQUIPMENT

ITEM #	QTY	DESCRIPTION	MODEL	SERIAL #
69	1	Hanchett knife sharpener (photo # 46)	54" DN	8057
70	1	Hanchett band saw sharpenener (photo # 47)	414RH	301
71	1	ACME circular saw sharpenener leveling block anvil, 4" x 10" (photo # 48)	n/a	n/a
72	1	Hanchett band saw tentionner 1 anvil, 10" x 48" (photo # 49)	n/a	n/a
73	1	lot of 8 spare blades (photo # 50)	n/a	n/a
MISC.				
74	1	14' aluminum ladder	n/a	n/a
75	1	18" gas fueled chain saw	n/a	n/a
76	1	1 ton manual hoist	n/a	n/a
77	2	16" electric chain saws	n/a	n/a
78	1	Amano digital punch clock 3 card holders	CP-3000	n/a
79	1	lot of metal bins for wooden spacers	n/a	n/a
BASEMENT				
80	1	belt conveyor under bi-saw, 5 hp motor, 16" x 46" 1 5 hp motor w/ gear reducer metal chute (photo # 51)	n/a	n/a
81	1	incline belt conveyor to vibrating conveyor, 16" x 18' 1 2 hp motor w/ gear reducer (photo # 52)	n/a	n/a

MÉGABOIS

3408 LAFONTAINE, LAC-MÉGANTIC, QUÉBEC

MACHINERY AND EQUIPMENT

ITEM #	QTY	DESCRIPTION	MODEL	SERIAL #
82	1	belt conveyor under trimmer to vibrating conveyor, 12" x 32' 1 3 hp motor w/ gear reducer metal chute (photos # 53, 54)	n/a	n/a
83	1	belt conveyor under trimmer to vibrating conveyor, 12" x 29' 1 3 hp motor w/ gear reducer metal chute (photos # 53, 54)	n/a	n/a
84	1	chain conveyor under rip saw to vibrating conveyor, 8" x 12' 1 3 hp motor w/ gear reducer metal chute (photo # 55)	n/a	n/a
85	1	vibrating conveyor, 30" x 142' 2 20 hp motor w/ gear reducer 1 48" metal detector (photo # 56)	n/a	n/a
86	1	Comact 60" chipper, (1991) with: 1 150 hp motor 1 screen, 8' x 8' 1 5 hp motor w/ gear reducer 1 rotating valve, 1 hp motor w/ gear reducer 1 incline chain conveyor, 8" x 22' 1 2 hp motor w/ gear reducer 1 Forano loading system, w/ end screw, 5 hp motor w/ gear reducer 1 Comact blower, 48" dia. x 18" face 1 75 hp motor 16" blower ducts 2 45° elbows (photos # 57, 58, 59, 60, 61)	60-C6	0060C6009201006 98
87	1	double chain incline conveyor under barker to reserve, 18" x 50' 1 3 hp motor w/ gear reducer (photo # 62)	n/a	n/a

MÉGABOIS
3408 LAFONTAINE, LAC-MÉGANTIC, QUÉBEC

MACHINERY AND EQUIPMENT

ITEM #	QTY	DESCRIPTION	MODEL	SERIAL #
88	1	Baker horizontal re-saw, (2003) 1 30 hp motor with: 1 overhead crane 1 pneumatic pusher 1 belt return conveyor, 12" x 8' (photos # 63, 64)	BBRO-0	02-3250
89	1	Mattison rip saw 1 20 hp motor 1 belt conveyor, 6" x 18' 1 2 hp motor w/ gear reducer (photo # 65)	404	n/a
90	1	Atlas Copco compressor, (1994) (photo # 66)	GA-610	ARP-748-039
91	1	Atlas Copco air dryer (photo # 67)	FD-604	n/a
92	1	vertical metal pressure tank, 24" dia. x 60"	n/a	n/a
93	2	14" trimmers 1 7,5 hp motor 1 adjustable guide (photo # 68)	n/a	n/a
94	1	Honda gas fueled pressure washer	4,5	n/a
95	1	3 hp portable compressor	n/a	n/a
<u>EXTERIOR</u>				
96	1	lot of wood spacers for dryer (photos # 69)	n/a	n/a



PHOTO # 1
ITEM # 7



PHOTO # 2
ITEM # 8



PHOTO # 3
ITEM # 9



PHOTO # 4
ITEM # 10



PHOTO # 5
ITEM # 10



PHOTO # 6
ITEM # 11



PHOTO # 7
ITEM # 12



PHOTO # 8
ITEM # 12



PHOTO # 9
ITEM # 12



PHOTO # 10
ITEM # 12



PHOTO # 11
ITEM # 12



PHOTO # 12
ITEM # 13



PHOTO # 13
ITEM # 13



PHOTO # 14
ITEM # 17



PHOTO # 15
ITEM # 19



PHOTO # 16
ITEM # 20



PHOTO # 17
ITEM # 21



PHOTO # 18
ITEM # 22



PHOTO # 19
ITEM # 22



PHOTO # 20
ITEM # 23



PHOTO # 21
ITEM # 24



PHOTO # 22
ITEMS # 25, 26



PHOTO # 23
ITEM # 27



PHOTO # 24
ITEM # 27



PHOTO # 25
ITEMS # 27, 28, 29



PHOTO # 26
ITEM # 30



PHOTO # 27
ITEM # 31



PHOTO # 28
ITEM # 32



PHOTO # 29
ITEM # 33



PHOTO # 30
ITEMS # 34, 36



PHOTO # 31
ITEM # 35



PHOTO # 32
ITEM # 37



PHOTO # 33
ITEM # 37



PHOTO # 34
ITEM # 38



PHOTO # 35
ITEMS # 39, 40



PHOTO # 36
ITEM # 40



PHOTO # 37
ITEM # 41



PHOTO # 38
ITEM # 42



PHOTO # 39
ITEM # 43



PHOTO # 40
ITEM # 43

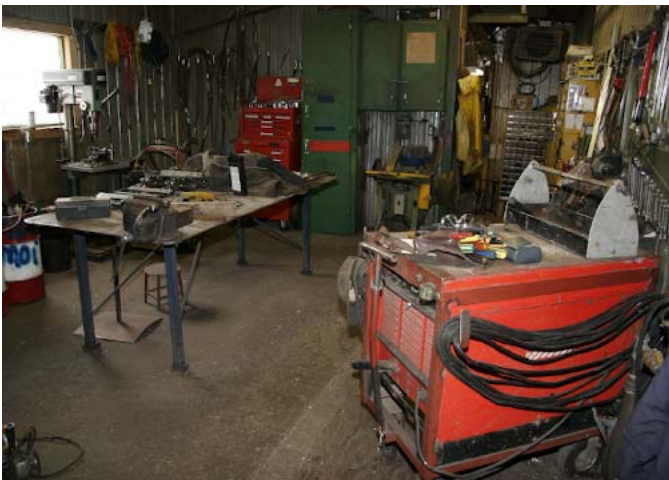


PHOTO # 41
ITEMS # 44-67



PHOTO # 42
ITEMS # 44-67

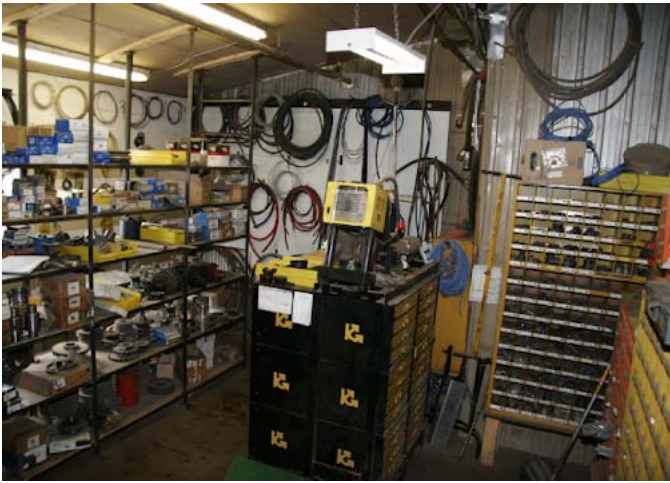


PHOTO # 43
ITEMS # 44-67



PHOTO # 44
ITEMS # 44-67



PHOTO # 45
ITEM # 68



PHOTO # 46
ITEM # 69



PHOTO # 47
ITEM # 70



PHOTO # 48
ITEM # 71



PHOTO # 49
ITEM # 72



PHOTO # 50
ITEM # 73



PHOTO # 51
ITEM # 80



PHOTO # 52
ITEM # 81



PHOTO # 53
ITEMS # 82, 83



PHOTO # 54
ITEMS # 82, 83



PHOTO # 55
ITEM # 84



PHOTO # 56
ITEM # 85



PHOTO # 57
ITEM # 86



PHOTO # 58
ITEM # 86



PHOTO # 59
ITEM # 86



PHOTO # 60
ITEM # 86



PHOTO # 61
ITEM # 86



PHOTO # 62
ITEM # 87



PHOTO # 63
ITEM # 88



PHOTO # 64
ITEM # 88



PHOTO # 65
ITEM # 89



PHOTO # 66
ITEM # 90



PHOTO # 67
ITEM # 91



PHOTO # 68
ITEM # 93



PHOTO # 69
ITEM # 96

MÉGABOIS - 3408 LAFONTAINE STREET, LAC-MÉGANTIC, QUÉBEC



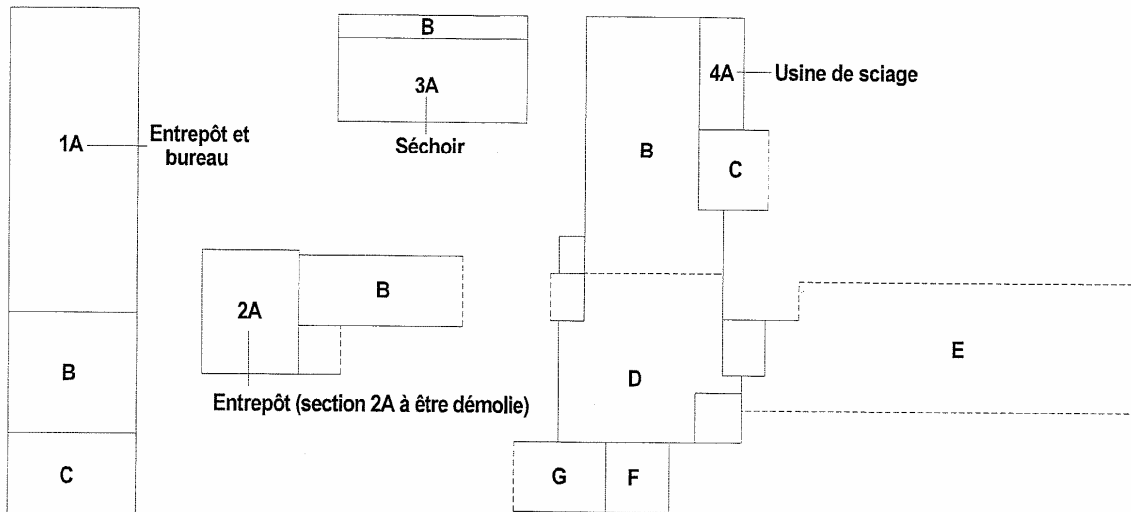
BRIEF DESCRIPTION OF THE SUBJECT PROPERTY BUILDING

The subject property includes a site occupied by a sawmill comprising various industrial detached buildings of one and two levels, built since 1950 and successively expanded during years. The current total building area is of 36 342 sf, excluding the area located in the basement, the portion of the sorting tables and excluding a warehouse to be demolished. These buildings were built for the transformation of hard wood timbers as well as for administrative offices.

USES AND AREAS

Building 1:	Offices, Garage and Warehouse	:	13 006 square feet
Building 2:	Warehouse	:	2 777 square feet
Building 3:	Dryers	:	4 177 square feet
Building 4:	Saw Mill	:	16 382 square feet
Sub-Total:	Above-ground	:	36 342 square feet

Building 4E :	Sorting Tables (shelter, without exterior walls)	:	9 915 square feet
Total Area		:	46 257 square feet



Mégabois (1989) inc.)
 3408, rue Lafontaine
 Lac-Mégantic, Québec

février 2004

SITE DESCRIPTION

LEGAL IDENTIFICATION

Renovated lots 3 108 844 and 3 109 412 of the Quebec Register, Registry Division of Frontenac, Quebec.

AREA : 1, 818, 968 sf

ACCESS

Access to the site via La Fontaine street which joins Salaberry street towards north. Route 161 leads to the municipalities of Sherbrooke towards the north and to the American border towards the south. Road 204 in the east direction leads to the city of St-George-of-Beauce.

TOPOGRAPHY

The land topography is sloping at an approximate 5% ratio.

GROUND IMPROVEMENTS

The main site, being lot 3 108 844, is asphalted in its northern part, in frontage to building 1, just as in certain places between the buildings. The remainder of the area is graveled and fenced in its north, south and east limits.

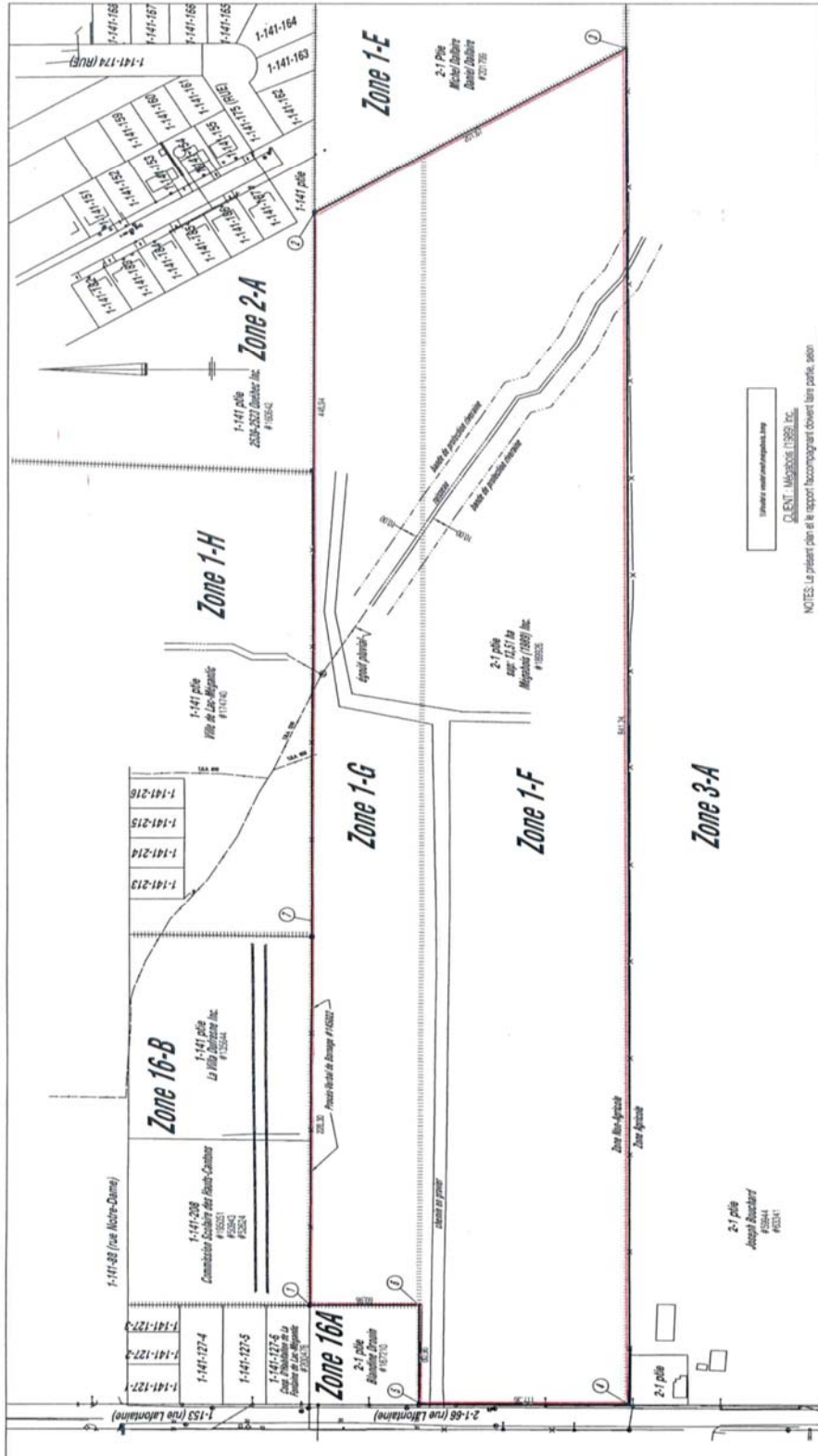
The secondary site, being lot 3 109 412, is partially graveled in its portion adjoining La Fontaine street.

SERVICES

All the usual municipal services are available.

LAND COVERAGE RATIO

The buildings occupy 12,7% of the main land (excluding the building to be demolished)



1-141-216
1-141-215
1-141-214
1-141-213

Zone 1-B
 1-141-208
 Cominco/Coastal des Roche-Catholac
 #15253
 #15254

Zone 1-H
 1-141-209
 2536-2570, Québec Inc.
 #15342

Zone 1-G
 1-141-206
 46,54

Zone 1-F
 2-1 pile
 sup. 1237 m²
 Megacore (1989) Inc.
 #15322

Zone 1-E
 2-1 pile
 Michel Dubé
 David Dubé
 #12775

Zone 1-A
 1-141-168
 1-141-167
 1-141-166
 1-141-165
 1-141-164
 1-141-163
 1-141-162
 1-141-161
 1-141-160
 1-141-159
 1-141-158
 1-141-157
 1-141-156
 1-141-155
 1-141-154
 1-141-153
 1-141-152
 1-141-151
 1-141-150
 1-141-149
 1-141-148
 1-141-147
 1-141-146
 1-141-145
 1-141-144
 1-141-143
 1-141-142
 1-141-141
 1-141-140
 1-141-139
 1-141-138
 1-141-137
 1-141-136
 1-141-135
 1-141-134
 1-141-133
 1-141-132
 1-141-131
 1-141-130
 1-141-129
 1-141-128
 1-141-127
 1-141-126
 1-141-125
 1-141-124
 1-141-123
 1-141-122
 1-141-121
 1-141-120
 1-141-119
 1-141-118
 1-141-117
 1-141-116
 1-141-115
 1-141-114
 1-141-113
 1-141-112
 1-141-111
 1-141-110
 1-141-109
 1-141-108
 1-141-107
 1-141-106
 1-141-105
 1-141-104
 1-141-103
 1-141-102
 1-141-101
 1-141-100
 1-141-99
 1-141-98
 1-141-97
 1-141-96
 1-141-95
 1-141-94
 1-141-93
 1-141-92
 1-141-91
 1-141-90
 1-141-89
 1-141-88
 1-141-87
 1-141-86
 1-141-85
 1-141-84
 1-141-83
 1-141-82
 1-141-81
 1-141-80
 1-141-79
 1-141-78
 1-141-77
 1-141-76
 1-141-75
 1-141-74
 1-141-73
 1-141-72
 1-141-71
 1-141-70
 1-141-69
 1-141-68
 1-141-67
 1-141-66
 1-141-65
 1-141-64
 1-141-63
 1-141-62
 1-141-61
 1-141-60
 1-141-59
 1-141-58
 1-141-57
 1-141-56
 1-141-55
 1-141-54
 1-141-53
 1-141-52
 1-141-51
 1-141-50
 1-141-49
 1-141-48
 1-141-47
 1-141-46
 1-141-45
 1-141-44
 1-141-43
 1-141-42
 1-141-41
 1-141-40
 1-141-39
 1-141-38
 1-141-37
 1-141-36
 1-141-35
 1-141-34
 1-141-33
 1-141-32
 1-141-31
 1-141-30
 1-141-29
 1-141-28
 1-141-27
 1-141-26
 1-141-25
 1-141-24
 1-141-23
 1-141-22
 1-141-21
 1-141-20
 1-141-19
 1-141-18
 1-141-17
 1-141-16
 1-141-15
 1-141-14
 1-141-13
 1-141-12
 1-141-11
 1-141-10
 1-141-9
 1-141-8
 1-141-7
 1-141-6
 1-141-5
 1-141-4
 1-141-3
 1-141-2
 1-141-1

CERTIFICAT DE LOCALISATION		BOLDUC, POULIN & ASSOCIÉS APPRENTIS-GEOMETRES	
PLAN ANNEXE AU		le 8 MAI 2003	
LOT(S): 2-1 DU RANG 1 DU VILLAGE DIAGNÉS		LAC-LEGANTIC	
CADASTRE: DU CANTON DE DITTOFFIELD		Par: ROBERT ROY Apprentis-Geometres	
MUNICIPALITÉ: DE LA VILLE DE LAC-LEGANTIC		DOSSIER: 03-5198	
CROQUIS/PROJECTION FONDÉE: DE FRONTENAC		MINUTE: 3785	
		PLAN: R-5380	
		FEUILLET: 22	

Site Plan, lot 3 109 412

ZONING

According to the local by-law of Lac-Mégantic regarding zoning which will come into effect the week of March 20, 2006, the site will be authorized to receive the following uses:

The main site will be located in zone M-31, this one allows the uses of class I-1 light industry and the uses of class I-2 including constraining industry. The C-11 class is also authorized and includes the wholesale and interior storage.

The secondary site will be located in zone R-33, this one allows the uses of the H-1 class including isolated constructions of the one-family type plus multi-family constructions.

The principal characteristics of this zoning can be described in the following way:

ZONE DESIGNATION

I-1, I-2, C-11 et H-1

AUTHORISED USES

- I-1, light industry : Little or no constraining industry including the food industry, metallic products, car parts and accessories, small boat construction etc.
- I-2, Constraining Industry : Constraining industry including the timber and shingle industry; of planks and plywood; wood preservation, agglomerated panels; paper; oil products, chemical, etc.
- C-11, Wholesale : Wholesale and interior storage includes the wholesale of metals and minerals or oil in bulk; or manufactured products on the spot; the interior storage of various products, etc.
- H-1, Dwelling : Isolated one family and multi family dwellings.

MUNICIPAL ASSESSMENT (2004-2006)

Land	:	255 000 \$ (0.14\$/sf)
Building	:	<u>508 600 \$</u>
Total	:	763 600 \$

PROPERTY TAXES (2006)*

Municipal	:	12 210.09 \$
School	:	<u>2 645.87 \$</u>
Total	:	14 855.96 \$

Neighbourhood Photographs



La Fontaine street in the south direction



La Fontaine street in the north direction



Notre-Dame street in the west direction



Notre-Dame street in the east direction